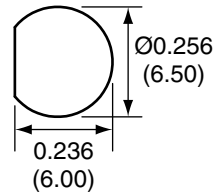
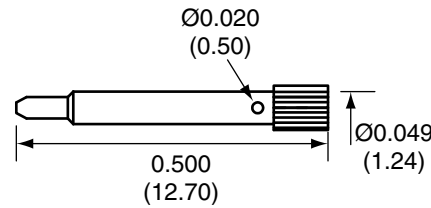


1		
Description	Material	Finish
Body	Brass	Nickel
Pin	Brass	Gold
Insulation	Teflon	Teflon
O Ring	Si Rubber	Rubber
Support	Brass	Nickel
Washer	Brass	Nickel
Nut	Brass	Nickel
Spacer	Teflon	Teflon

RECOMMENDED MOUNTING HOLE



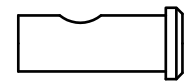
PIN



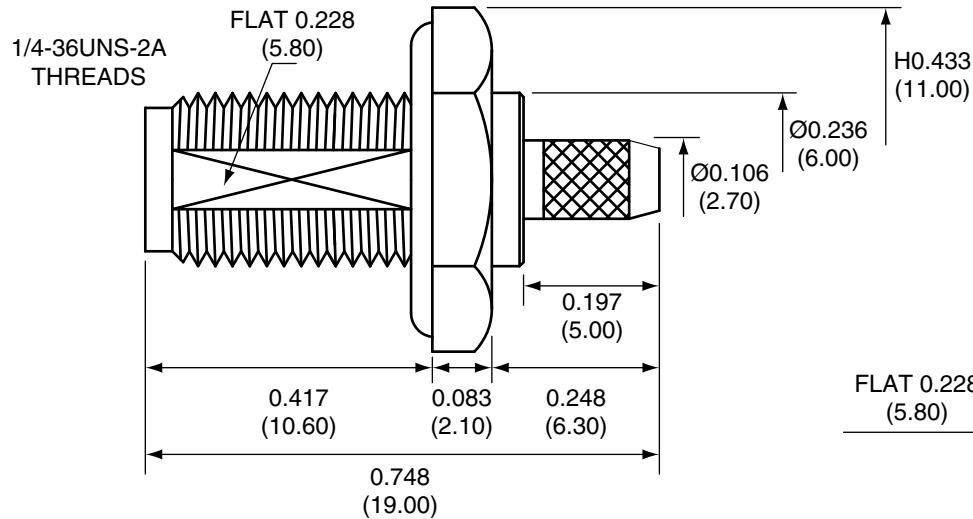
SPACER



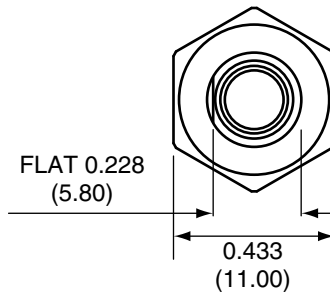
SUPPORT



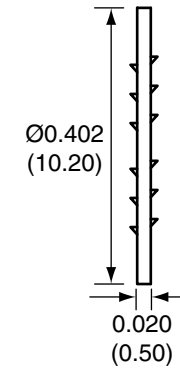
SIDE VIEW



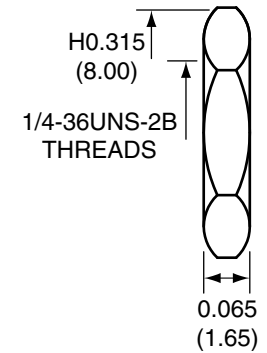
BACK VIEW



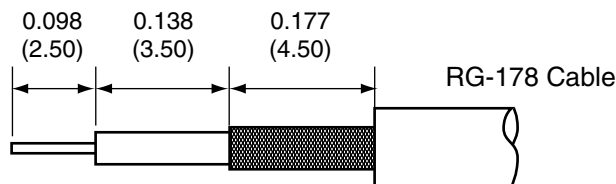
WASHER



NUT



RECOMMENDED CABLE STRIPPING DIMENSIONS



CONREVSMA014-R178 ASSEMBLY INSTRUCTIONS

1. Strip the cable to the recommended dimensions.
2. Solder the support onto the braid.
3. Place the spacer onto the center conductor.
4. Solder or crimp the pin onto the center conductor.
5. Insert the pin, center conductor, spacer, and support into the body until the top of the pin is even with the body.
6. Crimp the tail of the body onto the support with a hex crimp tool.

Title RP-SMA FEMALE BULKHEAD MOUNT CABLE
END CRIMP WITH O-RING FOR RG178 CABLE

Part No. CONREVSMA014-R178

Revision: 1.0

Dimensions: INCHES (mm)

Date: 6/7/2007

CONNECTOR CITY
159 ORT LANE
MERLIN, OR 97532
PH (541)-471-6256
FAX (541)-471-6251

Sheet 1 of 1

CONNECTOR CITY
THE VALUE OF CONNECTIONS